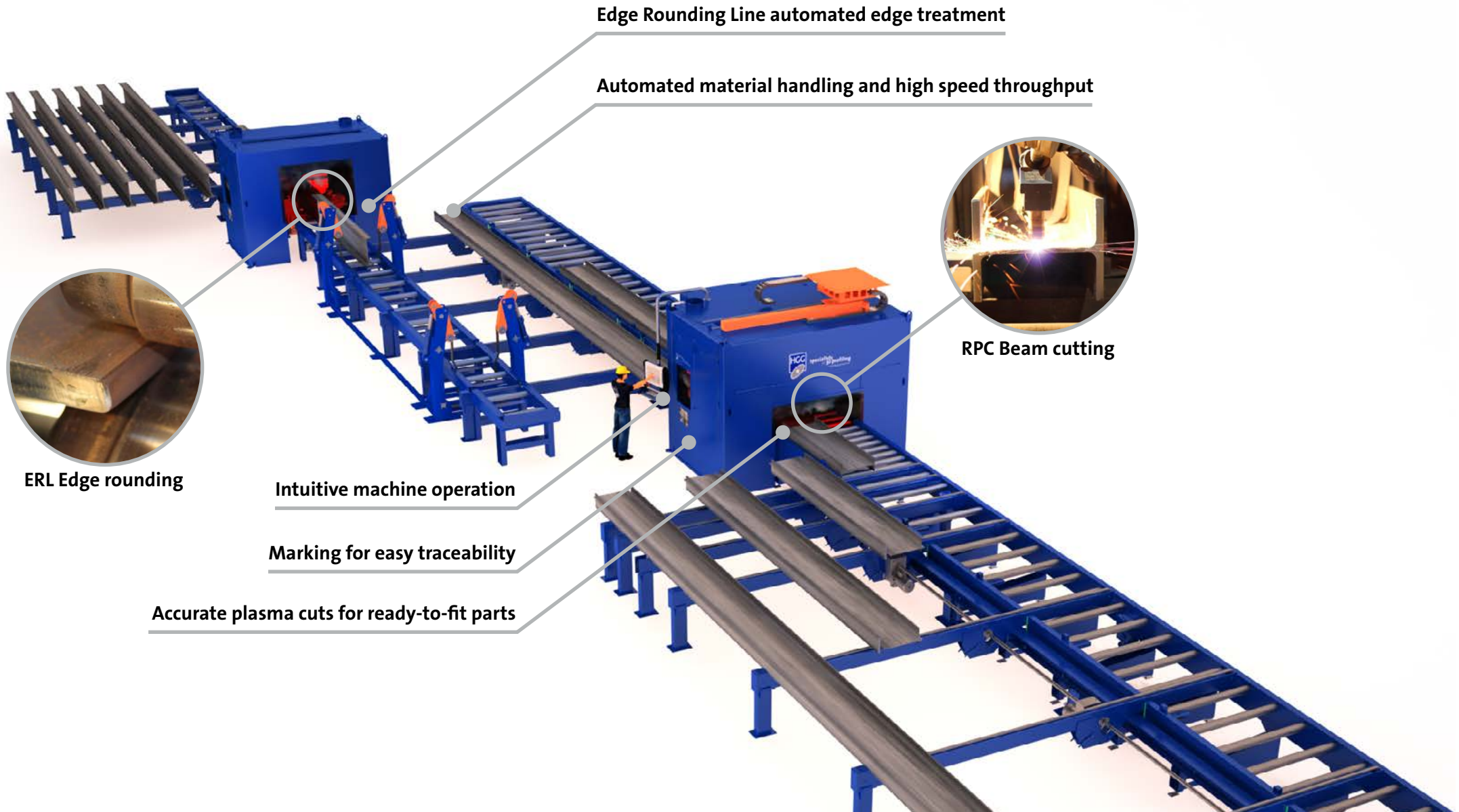




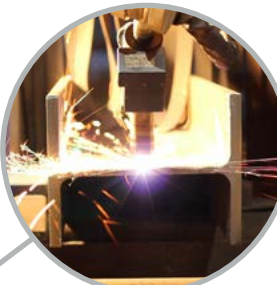
specialists
in 3D profiling

RPC | Highly productive beam cutting line with automated edge rounding

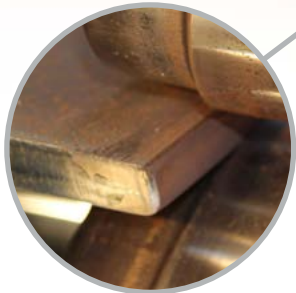


Edge Rounding Line automated edge treatment

Automated material handling and high speed throughput



RPC Beam cutting



ERL Edge rounding

Intuitive machine operation

Marking for easy traceability

Accurate plasma cuts for ready-to-fit parts

RPC | Highly productive beam cutting line with automated edge rounding



Edge Rounding Line

Fast and high quality edge rounding without grinding or milling.

Automated edge treatment



Optionally the RPC can be equipped with an Edge Rounding Line to prevent labour intensive grinding and milling ensuring an even and complete coating on the surface.

Approved rounding technique



The rolling method doesn't interfere with the material standards. Lab research reports available on request.

Avoid rejected coatings

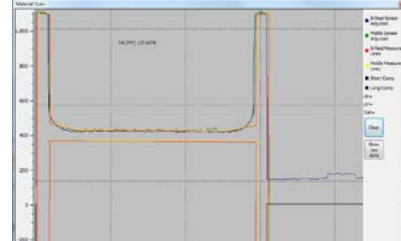


Easily meet the edge treatment requirements as described in NEN-EN-ISO 8501-3 (P2/P3). No risk of disapproval by the coating specialist in the critical phase of a project.

Beam Cutting Line

High speed plasma cutting of ready-to-fit parts prepared for any desired connection.

Fast material measurements



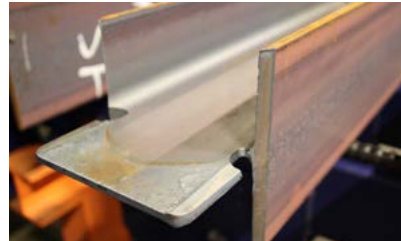
Accurate laser triangulation measurements of the surface enable adaptation of the theoretical 3D cutting paths to the deviations of the raw material.

High speed throughput



Continuous bolt hole cutting and interlinked cutting sequences enable a significantly shorter throughput time.

Practically eliminate grinding



HGG has developed unique cutting techniques to practically eliminate the need for finishing by grinding.

	I	O <i>Optional</i>	T <i>Optional</i>	C <i>Optional</i>	I <i>Optional</i>	L <i>Optional</i>
RPC 600	max. 620 x 430 mm 24.4" x 16.9"	max. 600 x 400 mm 23.6" x 15.7"	max. 550 x 200 mm 21.7" x 7.9"	max. 620 x 430 mm 24.4" x 16.9"		unequal max. 550 x 150 mm 21.7" x 5.9" equal max. 400 x 400 mm 15.7" x 15.7"
Edge rounding option	max. 620 x 430 mm 24.4" x 16.9"		max. 550 x 200 mm 21.7" x 7.9"		max. 500 x 30 mm 19.7" x 1.2"	
RPC 1200	max. 1220 x 430 mm 48" x 16.9"	max. 600 x 400 mm 23.6" x 15.7"	max. 1100 x 400 mm 43.3" x 15.7"	max. 1220 x 430 mm 48" x 16.9"		unequal max. 1100 x 400 mm 43.3" x 15.7" equal max. 550 x 550 mm 21.7" x 21.7"
Edge rounding option	max. 1220 x 430 mm 48" x 16.9"		max. 1100 x 400 mm 43.3" x 15.7"		max. 500 x 30 mm 19.7" x 1.2"	
Other profiles:	<i>on request</i>					

Contact us and configure your machine!

HGG Profiling Equipment by Specialists in 3D Profiling

I: www.hgg-group.com
T: (+31) 0227 50 40 30
F: (+31) 0227 50 19 03

Local contacts

Asia Pacific

Mr. Leonardo Gon
Regional Sales Manager

E: asiapacific@hgg-group.com
T: (+86) 136 8163 2558
T: (+63) 822 824 500

Europe & Russia

Mr. Daan van Dee
Regional Sales Manager

E: sales@hgg-group.com
T: (+31) 61 1884 755
T: (+7) 915 0726 523

Americas

Mr. John Tutino
Regional Sales Manager

E: americas@hgg-group.com
T: (+1) 330 461 6855

Middle East, India & Africa

Mr. Anil Kumar Gaddameedi
Regional Sales Manager

E: hggme@hgg-group.com
T: (+971) 55 8077 643
T: (+91) 770 2055 222

